



ILLUSTRATED PARTS CATALOG

Designs, materials, weights, specifications, and dimensions for equipment or replacement parts are subject to change without notice.

BUNN-O-MATIC CORPORATION

POST OFFICE BOX 3227

SPRINGFIELD, ILLINOIS 62708-3227

PHONE: (217) 529-6601 FAX: (217) 529-6644

www.bunn.com

BUNN-O-MATIC COMMERCIAL PRODUCT WARRANTY

Warranty statements and information can be found on our website. Please visit <https://commercial.bunn.com/support/warranty-lookup> for further details.

TABLE OF CONTENTS

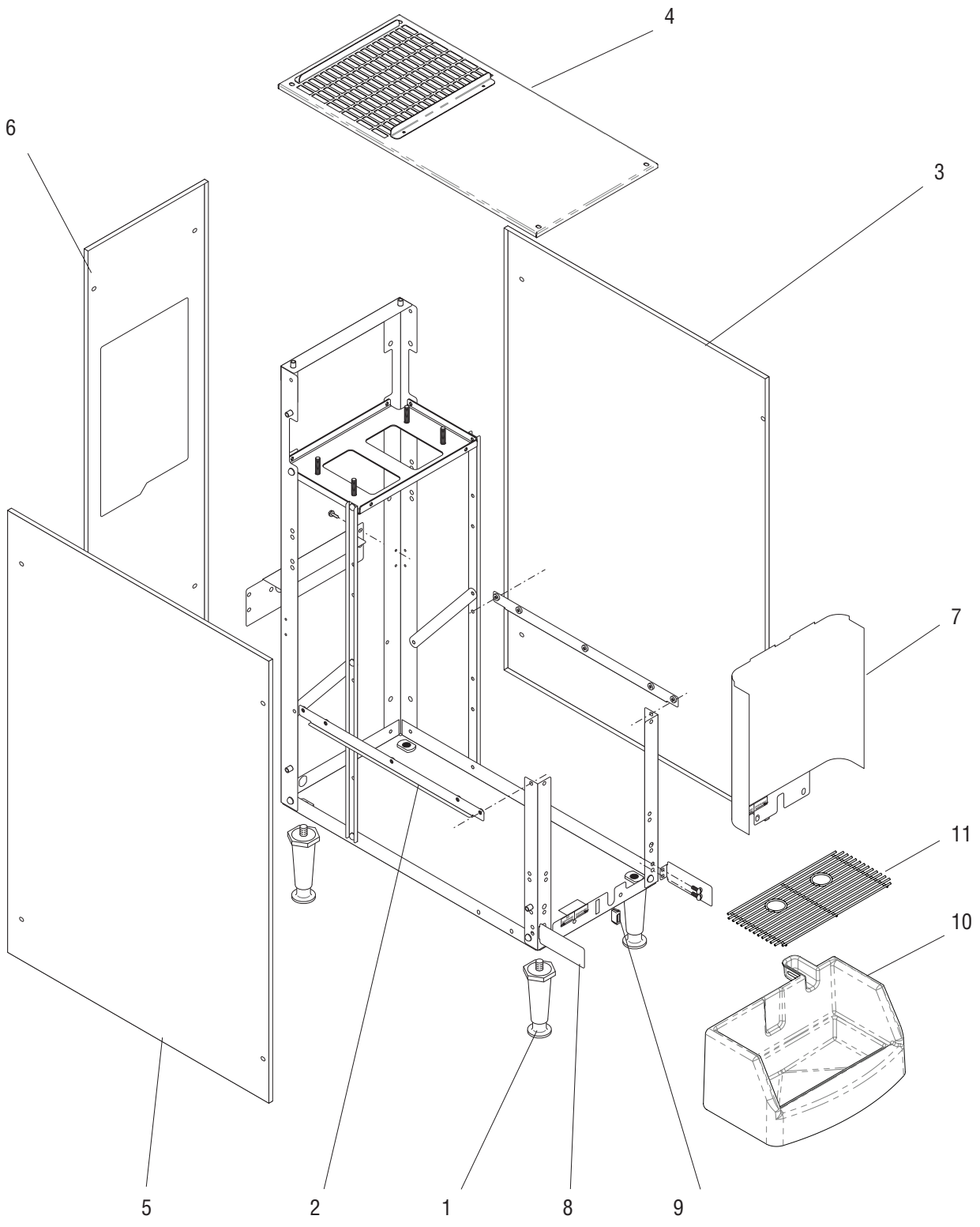
Main Frame & Covers	4
Upper Cabinet.....	6
Cabinet Platform Base & Tray Assy	8
Inner & Outer Door Assy	10
Refrigeration Components.....	12
Fan Assembly	14
Water Tank Assy	16
Circulation Pump & Lines.....	18
Water Tank Inlet Line & Product Coil.....	20
Dispense Platform Assy	22,24
Dispense Valve Assy (Fast Flow) & Nozzle	26
Electrical Components & Wiring Harnesses	28

To search this document electronically, press “control” + “F” (on P.C.) or “command” + “F” on Mac, then type in description or part number, press “enter”.



MAIN FRAME & COVERS

JDF-2



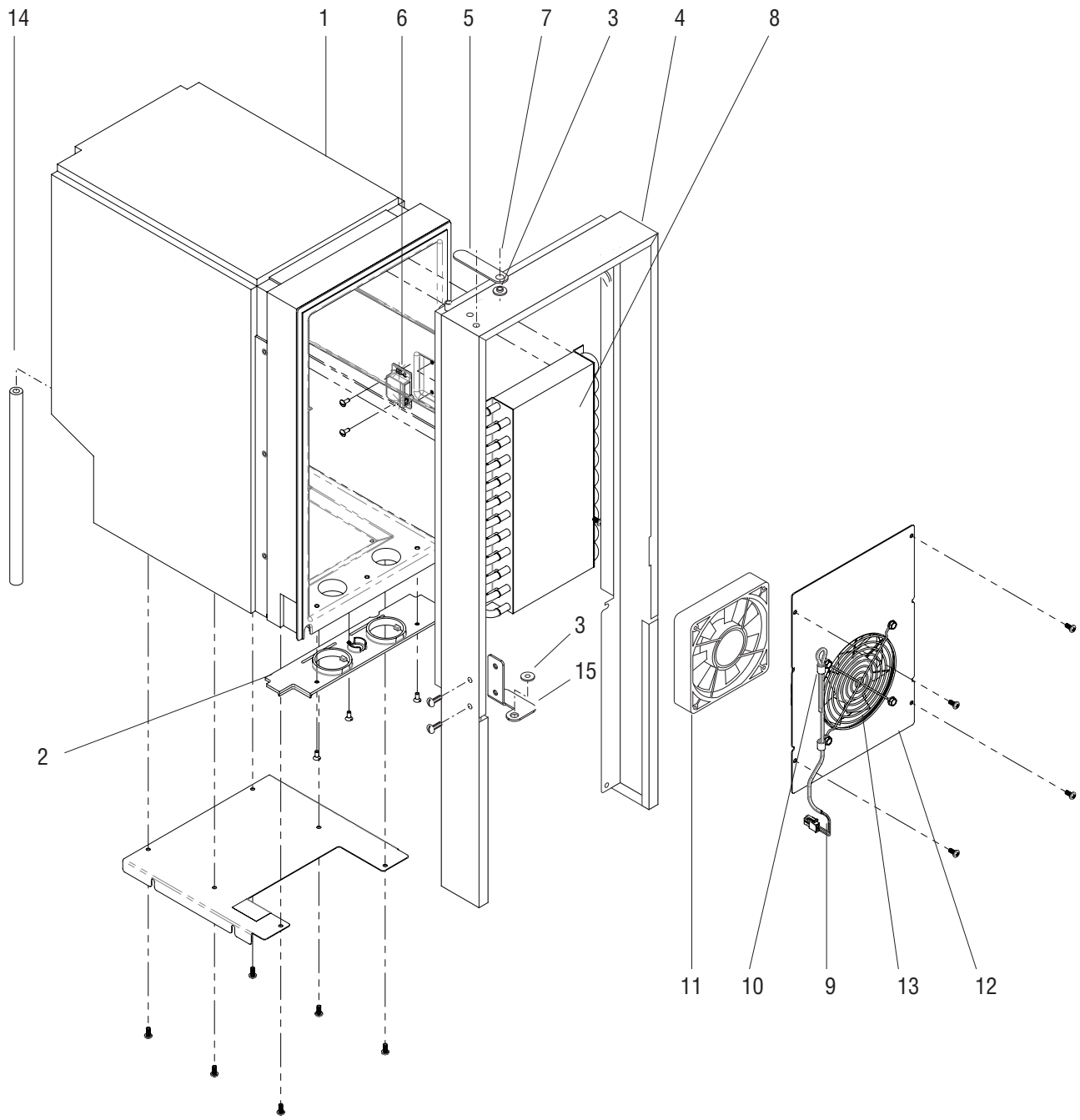
MAIN FRAME & COVERS

ITEM	PART NO.	QTY.	DESCRIPTION
1	26528.0000	4	Leg
	03996.0000	4	Pad, Non-skid
2	38654.0000	2	Bracket, Side
	02308.0000	4	Screw, Pan Head #8-32 x .38"
3	53233.1008	1	Panel, Right
	02331.0001	4	Screw, Truss Head, Blk #10-32 x .38"
	01532.0000	1	Lock Washer, Int.-tooth .438"
4	53916.0002	1	Weldment, Top Panel SST JDF-2S
	02331.0000	4	Screw, Trh Sltd w/Serr 10-32x.38
	01512.0000	1	Lock Washer, Ext T #10 Zinc Pl
5	53233.1009	1	Panel, Left
	02331.0001	4	Screw, Truss Head, Blk #10-32 x .38"
	01532.0000	1	Lock Washer, Int.-tooth .438"
6	53234.1003	1	Panel, Back w/Decals
	02331.0001	4	Screw, Truss Head, Blk #10-32 x .38"
	01532.0000	1	Lock Washer, Int.-tooth .438"
7	38661.0000	1	Panel, Splash
	02308.0000	2	Screw, Pan Head #8-32 x .38"
8	38617.0001	2	Bracket
	02308.0000	4	Screw, Pan Head #8-32 x .38"
9	21436.0000	1	Catch, Magnetic
10	44015.1001	1	Tray Assy, Extended Drip
11	26801.0005	1	Grate, Drip Tray



UPPER CABINET

JDF-2



UPPER CABINET

ITEM	PART NO.	QTY.	DESCRIPTION
1	38857.1004	1	Cabinet Assy
	24544.0002	6	Screw,Pnh Phh #8-16 X .375 Lg Tri-Lobe
2	34784.0001	1	Plate, Bottom Closure
	01359.0000	3	Screw, Flat Head #8-32 x .38"
3	34362.0006	2	Bushing, Hinge
4		1	Wrap (Late Models with bolt on door hinge)
		6	Screw,Pnh Phh #8-16 X .375 Lg Tri-Lobe
		4	Screw, Pan Head #8-32 x .38"
5	34785.0001	1	Bracket, Hinge
	02331.0001	2	Screw, Truss Head, Blk #10-32 x .38"
	43951.0000	2	Washer
6	34666.0002	1	Catch, Door Latch
	01347.0000	2	Screw, Trh Serr sst 6-32x.38
7	34741.0001	1	Screw, Shoulder
8	33333.0000	1	Coil, Water
9	43694.0000	1	Sensor Assy, Temperature
10	05920.0000	2	Clamp, Cable-Nylon Nat .250 ID
11	33297.0003	1	Fan Assy
	38616.0000	4	Screw, Hex Head #10-24
12		1	Bracket, Fan 120 X 120 X 25 JDF-2S FF
	24544.0002	4	Screw,Pnh Phh #8-16 X .375 Lg Tri-Lobe
13	34010.0001	1	Guard, Fan
14		1	Tube, Silicone .25"ID x 9.0" (Order item 16)
15	41385.0000	1	Bracket Weldment, Door Hinge

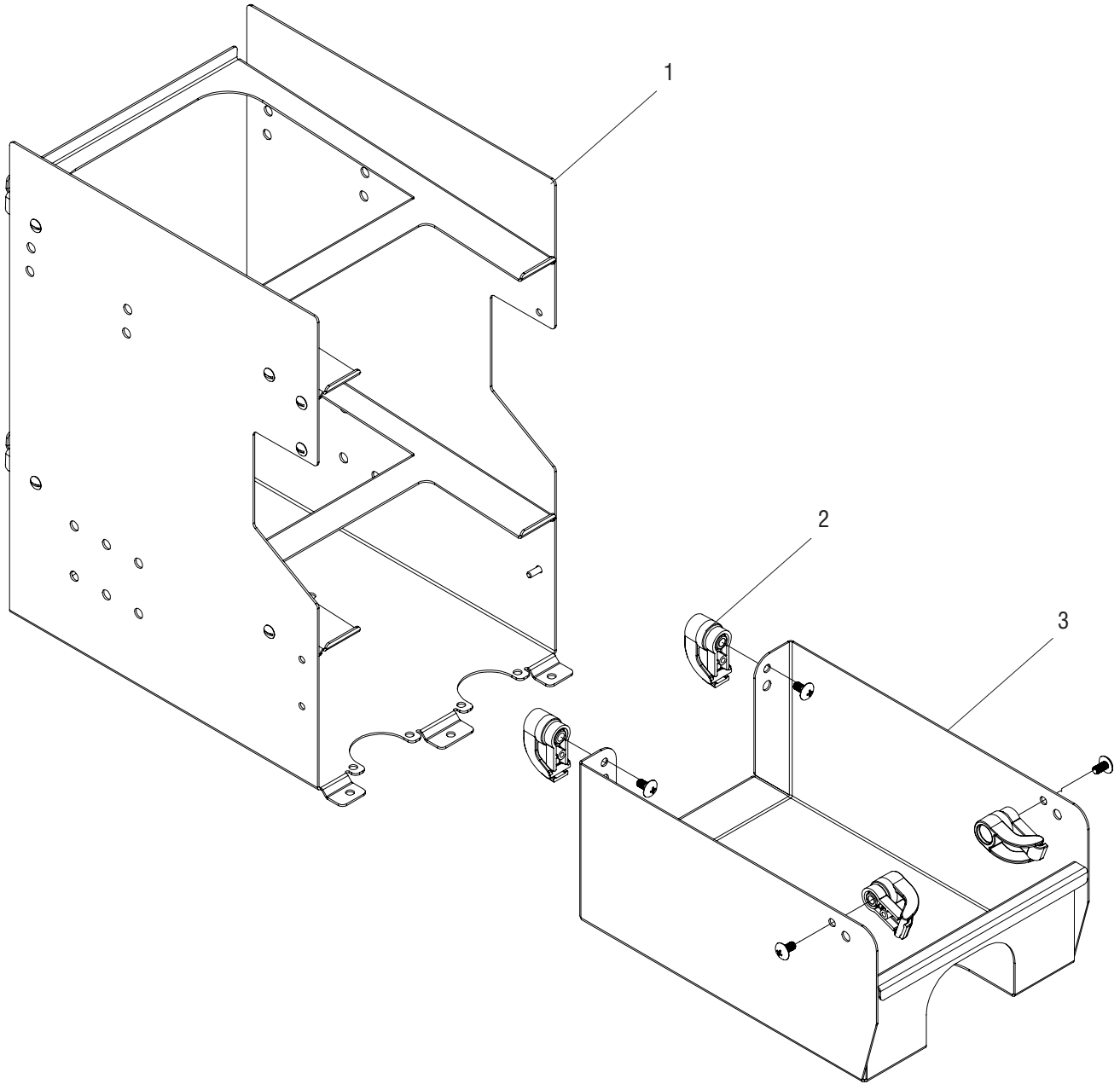
The following items are not illustrated

16	11707.1000	-	Tube, Silicone-.25ID X 12.0"LG
	11707.1001	-	Tube, Silicone-.25ID X 36.0"LG
	11707.1002	-	Tube, Silicone-.25ID X 120.0"LG



CABINET PLATFORM BASE & TRAY ASSY

JDF-2



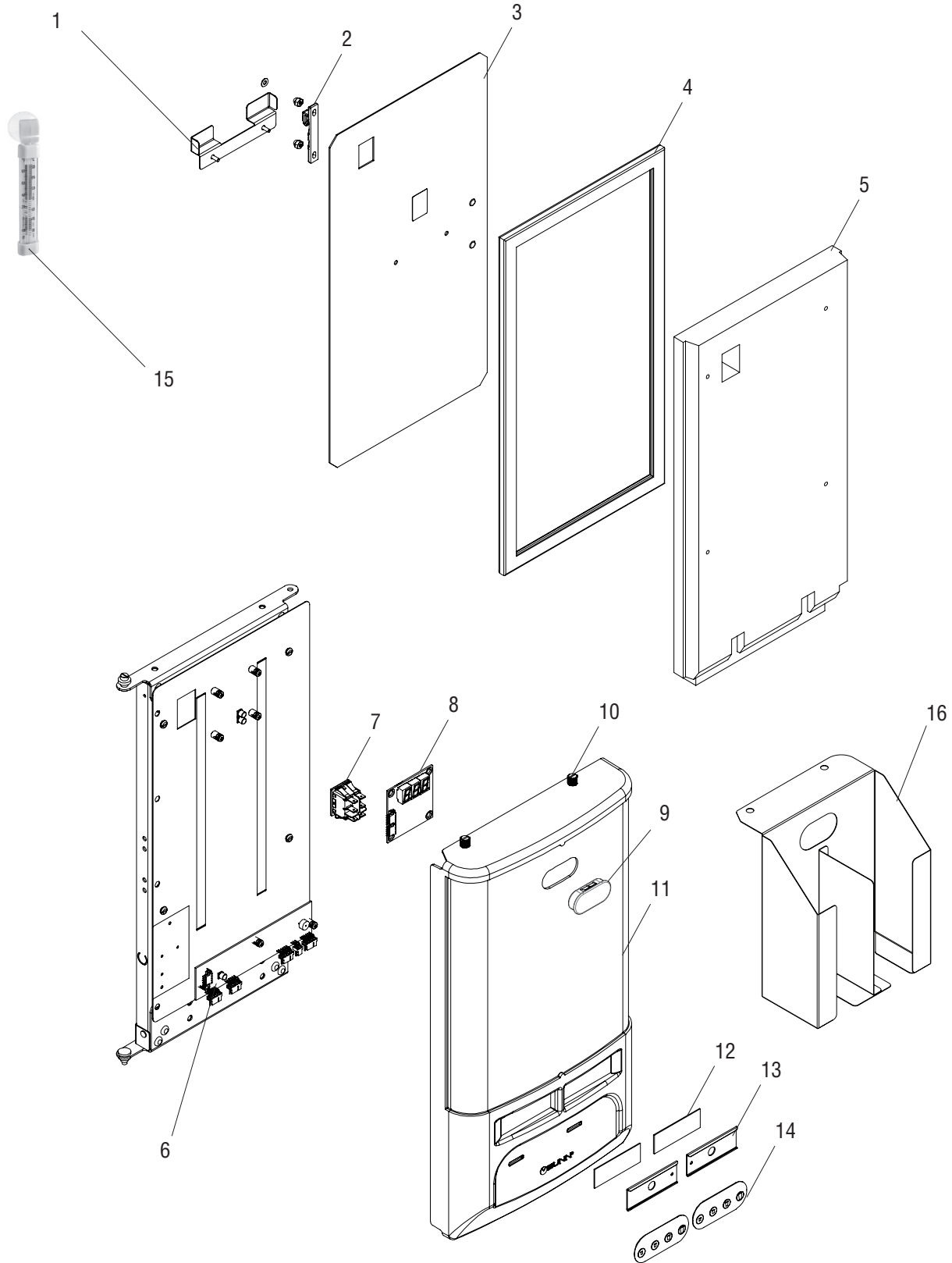
CABINET PLATFORM BASE & TRAY ASSY

ITEM	PART NO.	QTY.	DESCRIPTION
1		1	Base Wldmt, Platform JDF-2S FF
2	57478.1000	4	Magnet Latch Assy (Note: Qty-4 per Tray Assy)
	57478.0001	4	Magnet Latch Mtg, BIB Bag
	57478.0002	4	Magnet Latch Arm, BIB Bag
	00910.0001	4	Nut, Hex 10-32 Stl Zinc Plated
	39475.0000	4	Magnet, .5 DIA X .50 12.3 lbs
	57526.0001	4	Screw, Trh Phl Lock 10-32 X .38 Stl Zinc
3	57445.1001	2	Kit, Tray Assy BIB JDF-2S MAG (Includes Item 2, Qty-4)



INNER & OUTER DOOR ASSY

JDF-2



INNER & OUTER DOOR ASSY

ITEM	PART NO.	QTY.	DESCRIPTION
1		1	Bracket, Thermo
		2	Screw, HEX, #8-32 x .38"
2	34667.0001 02319.0000	1	Keeper, Cabinet Latch
		2	Nut, Acorn #6-32
3		1	Panel, Inner
4	38568.0002	1	Gasket, Door
5		1	Foam Door, Inner
6	50477.1000	1	CBA, JDFS PC 4 SW
7	52922.0001	1	Switch, Rocker DPDT On-Off-On
8	57177.1000	1	CBA, Display JDF2S/4S
9		1	Plug, Clear Window Oval
10	37988.0001	2	Screw, Captive 10-32 X .50 SST
11	38476.1004	1	Cover, Door
12	32861.0022	2	Label
13	37018.0001	2	Holder, Flavor Label
14	50490.1001	2	Switch, Membrane Four Button
15	57443.0000	1	Thermometer, 3.5 In Tube JDF-FF (McD)
16	57167.1005	1	Kit, Lid Holder Wldmt Clear Coated w/Pad

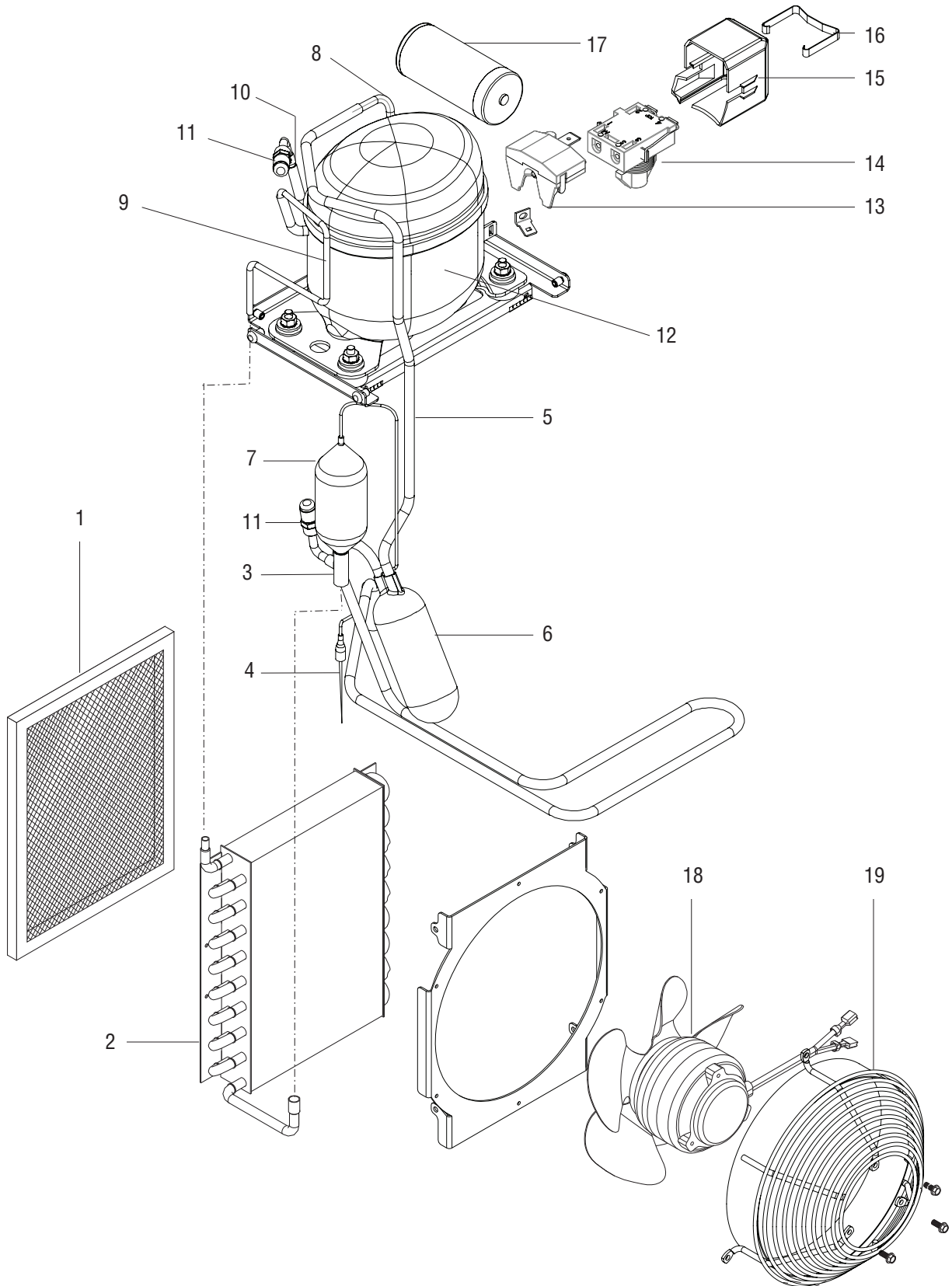
The following items are not illustrated

17	32861.0023	1	DECALS, FLAVORS JDF (MCD)
----	------------	---	---------------------------



REFRIGERATION COMPONENTS (CUBIGEL B38G5L)

JDF-2



REFRIGERATION COMPONENTS (CUBIGEL B38G5L)

ITEM	PART NO.	QTY.	DESCRIPTION
1	35164.1001	1	Air Filter Assy (Includes item 13)
2	29951.0004	1	Condenser
	02335.0001	4	Screw, Crimptite #8 x .38"
3	00396.0002	1	Tee (Requires brazing to install)
4	35178.0000	1	Cap Tube, Evap Adapter (Requires brazing to install)
5		1	Tube, Suction Accum/Compr JDF-2S FF
6	32776.0000	1	Accumulator
7	35175.1008	1	Kit, Filter Dryer Assy, Suct JDF2-S FF (Includes Item 22)
8	54270.0002	1	Elbow, Tube .250 X .236X 84 DEG
9		1	Tube, Discharge Compressor/Condenser
10	54978.0000	1	Adapter, Copper Tube .236 OD x .256 ID
11		2	Valve,Access .25 OD X 90 DEG
12	53850.1000	1	Kit, JDF-2S Compressor (B38G5L) Replacement 120V
	23700.0000	4	Nut .25"-20
13	53851.0000	1	Overload Protector 120V
14	53852.0000	1	Relay, Compressor 120V
15	53847.0000	1	Cover
16	53848.0000	1	Clip
17	53849.0000	1	Capacitor, Start Comp 61 MFD 330V B38G
18	49292.1002	1	Fan Assy (Includes item 15,(Includes 19, See Fan Assembly)
	27243.0000	3	Screw #8-36 x .437"
19	52454.0004	1	Mount, Wire Guard
	02335.0001	3	Screw, Crimptite #8 x .38"

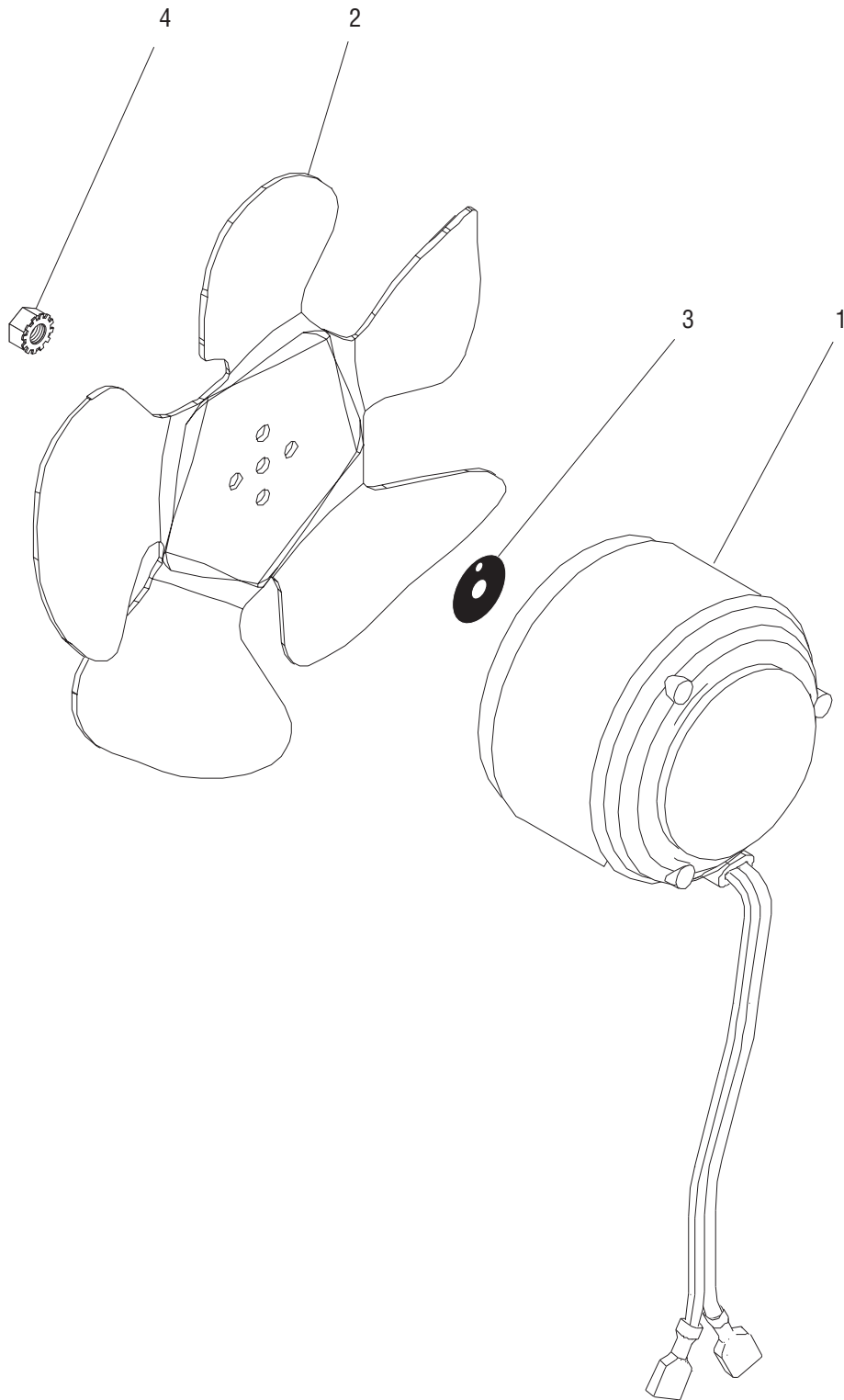
The following items are not illustrated

20	47581.0000	1	Coil Assy, Evaporator w/Spacer JDF-2S (See Water Tank Assy)
21		-	Tape, Cork-Pipe Insulating (Use as required)
22	M2336.1000	-	Insulation, Tube 25/50 - .375ID x 6.0 Ft.(Use as required)



FAN ASSEMBLY

JDF-2



P2704

FAN ASSEMBLY

ITEM	PART NO.	QTY.	DESCRIPTION
-	49292.1002	1	Fan Assy 120V (Includes items 1-5)
1	33603.0003	1	Motor Assy 120V
2	33602.0000	1	Blade, Fan
3	27258.0000	1	Silencer
4	23700.0000	1	Nut .25"-20

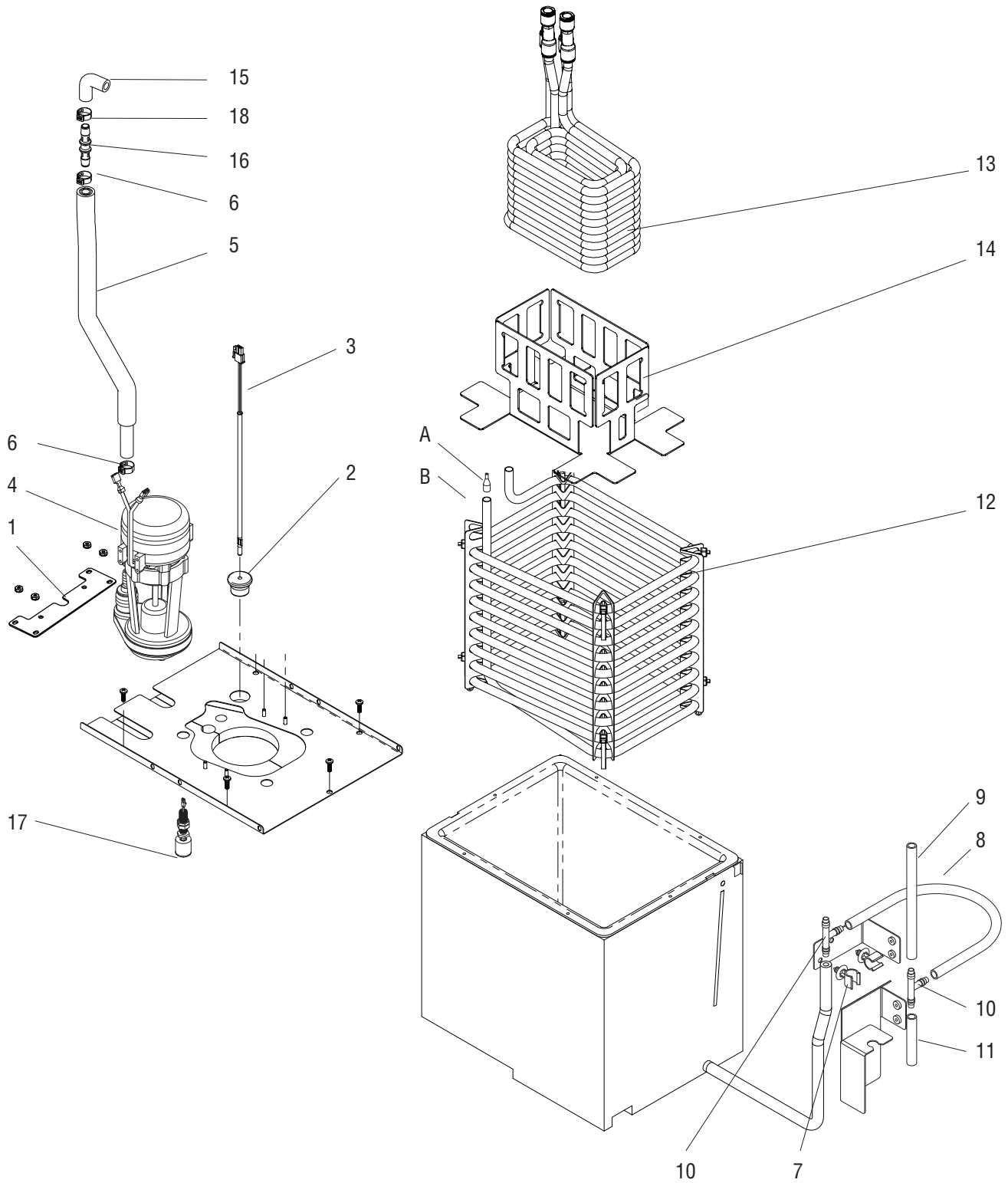
The following items are not illustrated

5	52454.0004	1	Mount, Wire Guard (See Refrigeration Components)
---	------------	---	--



WATER TANK ASSY

JDF-2



WATER TANK ASSY

ITEM	PART NO.	QTY.	DESCRIPTION
1		1	Bracket
		4	Nut, Keps #6-32
2	33801.0003	1	Grommet
3	28891.1000	1	Probe, Temperature
4	53761.0003	1	Pump Assy 120/230VAC
5		1	Tube, Silicone .313 ID x 22.00 LG (Order item 21)
	-----	1	Insulation, Tube 1/2IDX3/16W X 6FT (Order item 19 - Cut to length)
6	21275.0013	2	Clamp .539 - .638"
7	27410.0000	2	Clip, Tube Mounting
8		1	Tube, Silicone .25" ID x 7.0" (Order item 20)
9		1	Tube, Silicone .25" ID x 6.25" (Order item 20)
10	38605.0000	2	Tee .25" Barb
11		1	Tube, Silicone .25" ID x 3.0" (Order item 20)
12	47581.0000	1	Coil Assy, Evaporator w/Spacer JDF-2S (Includes Spacers & Ties)
13	47885.1006	1	Product Coil Assy (Includes wire form & ties)
14	50548.0003	1	Basket, Coil
15	45928.0000	1	Elbow
16	51902.0000	1	Connector .38" Barb
17	55112.0001	1	Switch Assembly, .58 Diameter Float w/Bhd & Nut
		1	Bulkhead .125 NPT, SST
	49830.0000	1	Lock Washer
	29264.0000	1	Nut, Hex SSt. .50-20 UNF
18	12422.0001	1	Clamp, Hose-Snap Type.59/.66ID

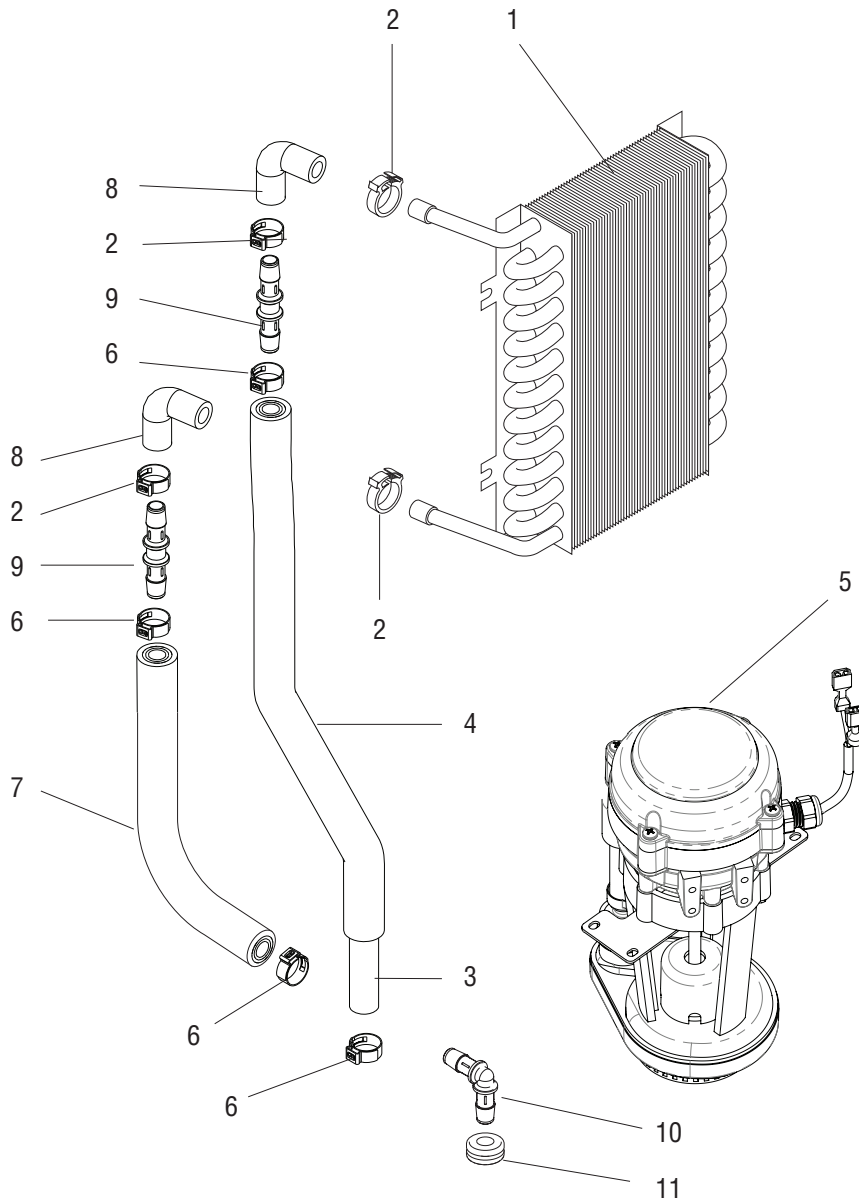
The following items are not illustrated

19	M2337.1000	-	Insulation, Tube 1/2IDX3/16W X 6FT
20	11707.1000	-	Hose, Silicone .25" ID x .625" OD x 12.0" (Cut to required length)
	11707.1001	-	Hose, Silicone .25" ID x .625" OD x 36.0" (Cut to required length)
	11707.1002	-	Hose, Silicone .25" ID x .625" OD x 120.0" (Cut to required length)
21	28526.1000	-	Tube, Silicone .313 ID x 12.00 LG (Cut to required length)
	28526.1001	-	Tube, Silicone .313 ID x 36.00 LG (Cut to required length)
	28526.1002	-	Tube, Silicone .313 ID x 60.00 LG (Cut to required length)



CIRCULATION PUMP & LINES

JDF-2



P4364.75

CIRCULATION PUMP & LINES

ITEM	PART NO.	QTY.	DESCRIPTION
1	-----	1	Coil, Upper Cabinet (See UPPER CABINET & PANELS)
2	12422.0001	4	Clamp, Hose-Snap Type.59/.66ID
3		1	Tube, Silicone .313 ID x 22.00 LG (Order item 13)
4	M2337.1000	1	Insulation,Tube 1/2IDX3/16W X 6FT (Cut to required length)
5	53761.0003	1	Pump Assy 120/230VAC
6	21275.0013	4	Clamp .539 - .638"
7		1	Tube, Silicone .313 ID x 13.00 LG (Order item 13)
8	45928.0000	2	Elbow, .375 ID X 1.25 LG
9	51902.0000	2	Connector, Union .38 X .38 KYNAR
10	40348.0000	1	Elbow, .38 Barb
11	54234.0000	1	Grommet

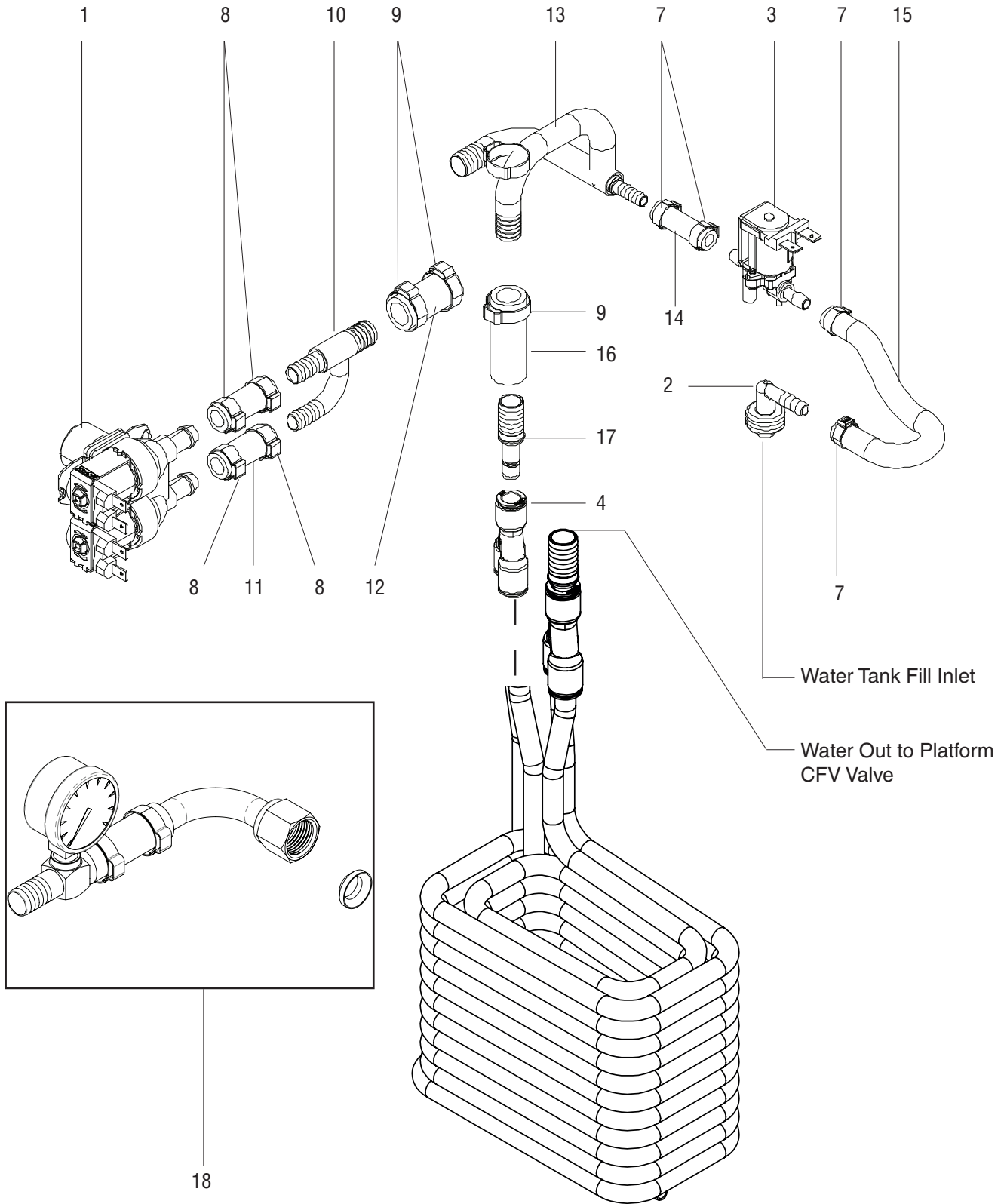
The following items are not illustrated

12	M2546.1000	-	Tape, Cork-Pipe Insulating (Use as required)
13	28526.1000	-	Tube, Silicone .313 ID x 12.00 LG (Cut to required length)
	28526.1001	-	Tube, Silicone 313 ID x 36.00 LG (Cut to required length)
	28526.1002	-	Tube, Silicone 313 ID x 60.00 LG (Cut to required length)



WATER TANK INLET LINE & PRODUCT COIL

JDF-2



WATER TANK INLET LINE & PRODUCT COIL

ITEM	PART NO.	QTY.	DESCRIPTION
1	57446.0000	1	Valve, Inlet Dual, 24VDC W/O Flow Washer
2	32656.0000	1	Fitting, Elbow
3	56009.0000	1	Valve, Water Bath 24VDC
4	49955.0001	2	Fitting, Push Connect
5		1	Coil, Inner
6		1	Coil, Outer
7	21275.0001	4	Clamp, 13.3
8	21275.0013	4	Clamp, 21mm
9	21275.0014	3	Clamp, 16mm
10	57447.0000	1	Fitting Wldmt, Y 3/8 X 1/2 Barb w/Chk SST
11	54496.0000	2	Hose, .38 ID X 1.5 LG Braided Wht Line (Order Item 19)
12		1	Hose, .510 ID X 1.50 LG Braided Wht Line (Order Item 20)
13		1	Tube Wldmt, 1/2 Water Inlet JDF-2S
14	54497.0000	1	Hose, .265 ID X 1.5 LG Braided Red Line (Order Item 21)
15	11707.0047	1	Tube, Silicone .25ID X 6.5LG (Order Item 22)
16		1	Hose, .510 ID X 2.0 LG Braided Wht Line (Order Item 20)
17	57291.0001	2	Fitting, 3/8 Stem x 1/2 Barb SST F-7673
18	57524.1000	1	Kit, 1/2 Inlet Pressure Gauge Assy (Includes Gasket)
	33149.0002	1	Gasket, .419 ID x .669 OD Nylon F-8011

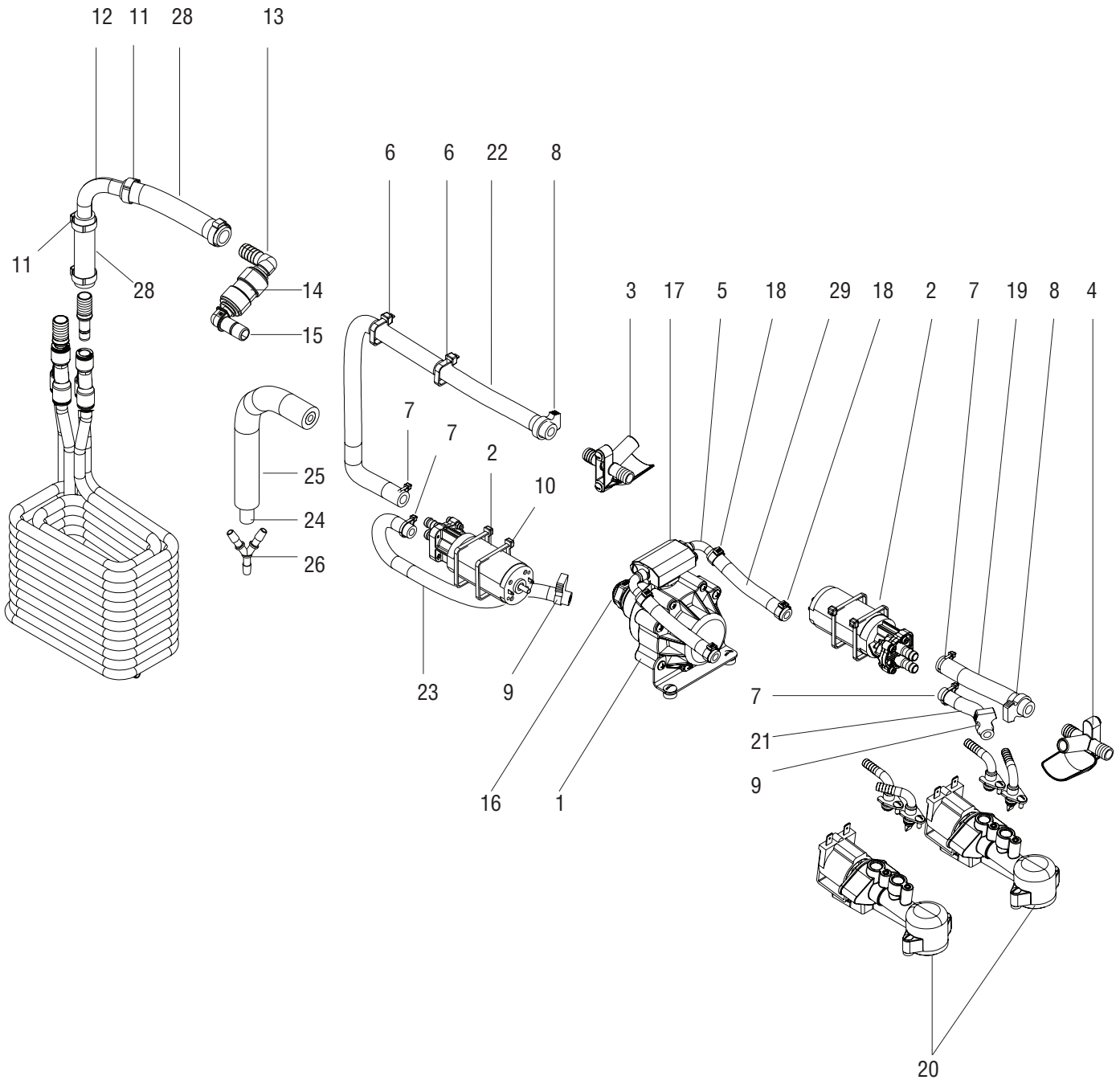
The following items are not illustrated

19	54496.1000	-	Hose, .38 ID X 12.0 LG Braided Wht Line (Cut to required length)
	54496.1001	-	Hose, .38 ID X 36.0 LG Braided Wht Line (Cut to required length)
	54496.1002	-	Hose, .38 ID X 120.0 LG Braided Wht Line (Cut to required length)
20	54492.1000	-	Hose, .510 ID X 12.0 LG Braided Wht Line (Cut to required length)
	54492.1001	-	Hose, .510 ID X 36.0 LG Braided Wht Line (Cut to required length)
	54492.1002	-	Hose, .510 ID X 120.0 LG Braided Wht Line (Cut to required length)
21	54497.1000	-	Hose, .265 ID X 12.0 LG Braided Red Line (Cut to required length)
	54497.1001	-	Hose, .457 ID X 36.0 LG Braided Red Line (Cut to required length)
	54497.1002	-	Hose, .457 ID X 120.0 LG Braided Red Line (Cut to required length)
22	11707.1000	-	Tube, Silicone-.25ID X 12.0"LG (Cut to required length)
	11707.1001	-	Tube, Silicone-.25ID x 36.0"LG (Cut to required length)
	11707.1002	-	Tube, Silicone-.25ID X 120.0"LG (Cut to required length)



DISPENSE PLATFORM ASSEMBLY

JDF-2



(Continued)

DISPENSE PLATFORM ASSEMBLY

ITEM	PART NO.	QTY.	DESCRIPTION
1	41570.0014	1	Valve, CFV
2	56893.0000	1	Pump, Gear 24VDC
3	38120.0008	1	Fitting, Left Bottle Adapter
4	38120.0009	1	Fitting, Right Bottle Adapter
5		1	Fitting, Barb
6		2	Tie, Cable-Nyl Blk 5.6LG .142W
7	36329.0000	4	Tie, Cable-Nyl Blk 4.04 LG
8	12422.0006	1	Clamp, Hose-Snap Type .53/.59ID
9	12422.0011	2	Clamp, Hose-Snap Type 59/.66ID
10		4	Tie, Cable-Nyl Blk 8.0 LG
11	21275.0014	4	Clamp, SST-.701/.827 DIA 21.0mm
12		1	Fitting, Elbow .500 BARB SST F-9015
13	57142.0000	1	Fitting, Elbow 1/2 STEM X 1/2 BARB
14	57263.0000	1	Fitting, UNION 1/2 PUSH TO CONN
15	57264.0000	1	Fitting,, Elbow 1/2 PUSH TO CONN
16	57181.0001	1	Fitting, 3/4 NPT Male X 1/2 P2C
17		1	Bar, DOLE Tee Fitting
18	21275.0001	4	Clamp, SST-.425/.523 DIA13.3
19	50731.0008	1	Tube, Silicone 8MM ID X 12MM OD X 4.00LG (Order Item 33)

The following items are not illustrated

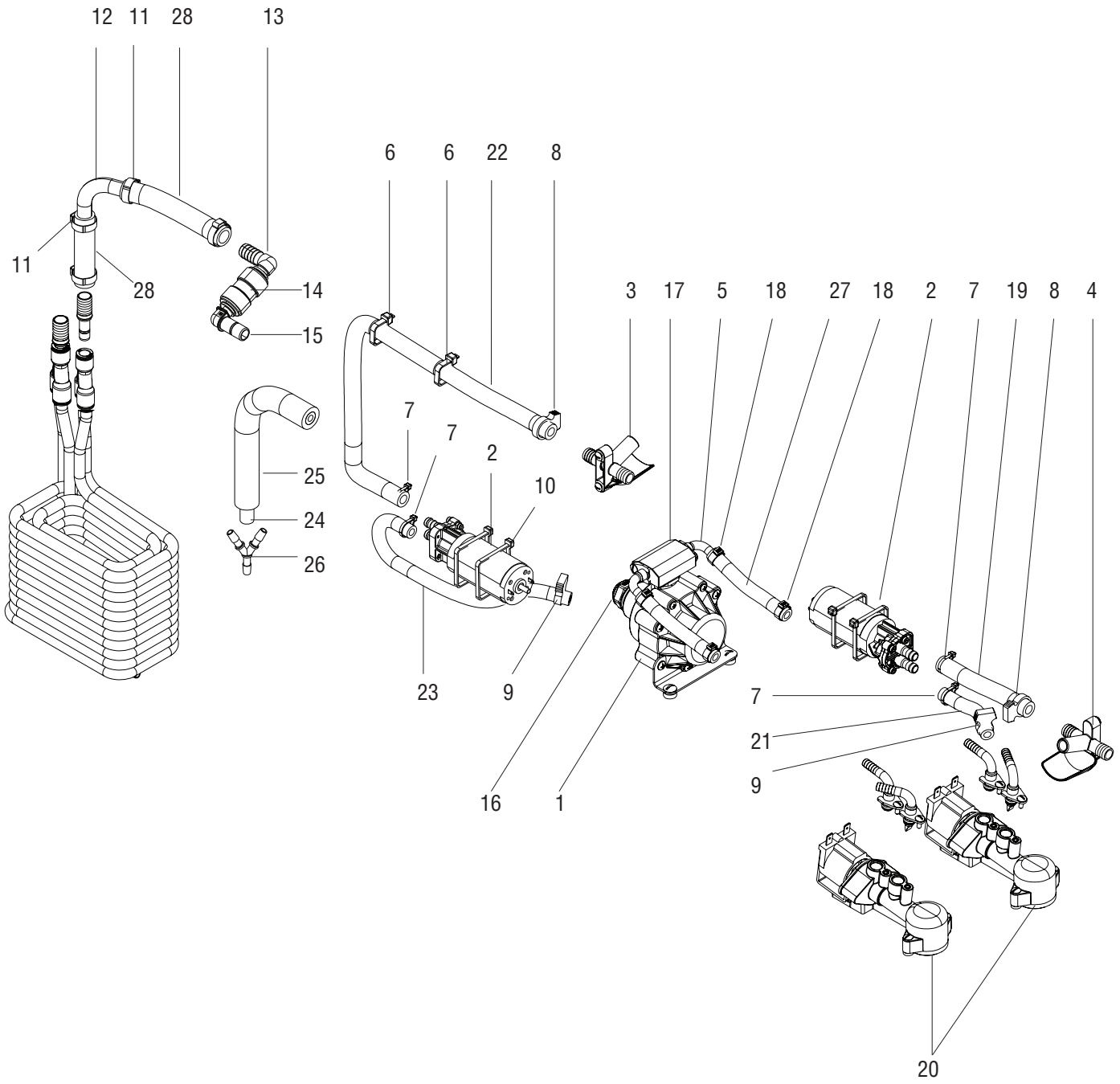
-	57530.1000	1	Kit, Bushing, DOLE Tee Fitting (Not Illustrated - Connects Item 17 to 1)
---	------------	---	--

(Continued)



DISPENSE PLATFORM ASSEMBLY

JDF-2



DISPENSE PLATFORM ASSEMBLY

ITEM	PART NO.	QTY.	DESCRIPTION
20	-----	2	Valve Assy, Fast Flow JDF2S (See Dispense Valve Assy)
21		2	Tube, Norprene .25ID X 3.00LG (Order Item 32)
22		1	Tube, Silicone 8MM ID X 12MM OD X 16.5LG (Order Item 33)
23		1	Tube, Norprene .25ID X 12.0LG (Order item 32)
24		1	Tube, Silicone-Trans .25ID x .500 (Order Item 31)
25	M2337.1000	1	Insulation,Tube 1/2IDX3/16W X 6FT (Cut to required length)
26	37290.0001	1	Fitting,"Y" Barb .25 ID Hose
27		2	Hose, .265 ID X 3.5 LG Braided Red Line (Order Item 30)
28		2	Hose, .510 ID X .740 OD Braided Wht Line (Order Item 29)

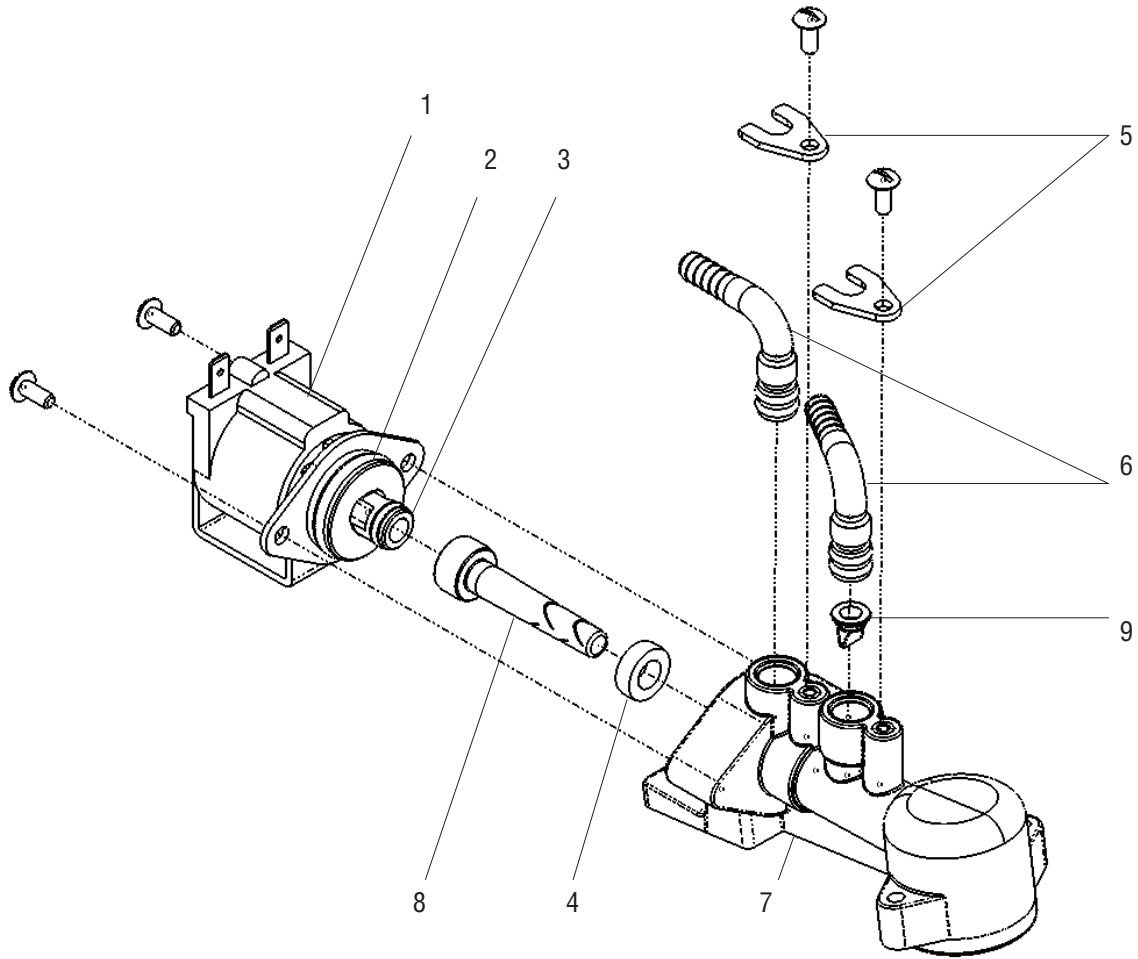
The following items are not illustrated

29	54492.1000	-	Hose, .510 ID X 12.0 LG Braided Wht Line (Cut to required length)
	54492.1001	-	Hose, .510 ID X 36.0 LG Braided Wht Line (Cut to required length)
	54492.1002	-	Hose, .510 ID X 120.0 LG Braided Wht Line (Cut to required length)
30	54497.1000	-	Hose, .265 ID X 12.0 LG Braided Red Line (Cut to required length)
	54497.1001	-	Hose, .457 ID X 36.0 LG Braided Red Line (Cut to required length)
	54497.1002	-	Hose, .457 ID X 120.0LG Braided Red Line (Cut to required length)
31	11707.1000	-	Tube,Silicone-.25ID X 12.0"LG (Cut to required length)
	11707.1001	-	Tube,Silicone-.25ID x 36.0"LG (Cut to required length)
	11707.1002	-	Tube,Silicone-.25ID X 120.0"LG (Cut to required length)
32	28755.1000	-	Tube, Norprene .25ID x 12.0LG (Cut to required length)
33	50731.1000	-	Kit, Tube Silicone 8MM IDX12MM OD 12IN
	50731.1001	-	Kit, Tube Silicone 8MM IDX12MM OD 3FT
	50731.1002	-	Kit, Tube Silicone 8MM IDX12MM OD 10FT

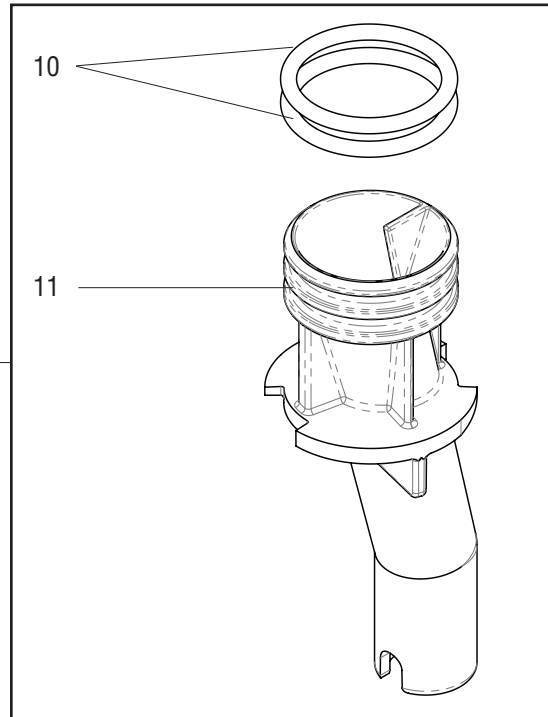


DISPENSE VALVE ASSEMBLY (FAST FLOW) & NOZZLE

JDF-2



12



DISPENSE VALVE ASSEMBLY (FAST FLOW)

ITEM	PART NO.	QTY.	DESCRIPTION
-	56890.1000	1	Valve Assy, Fast Flow JDF (Includes items 1 - 9)
1	56888.0000	2	Solenoid, 24V Fast Flow JDF (Includes items 2 & 3)
	01347.0000	2	Screw, Trh Serr SST 6-32x.38
2	33580.0000	1	O-ring
3	33553.0000	1	O-ring
4	37990.0000	1	Gasket
5		2	Plate, Fitting Retainer - DOLE
		2	Screw, Trh Serr SST 6-32x.38
6		2	Fitting, 90° .25 Barb X DOLE SST F-7128 (O-rings included)
7		1	Valve, Body
8	56889.0000	1	Injector, JDF High Flow .030
	56889.0001	1	Injector, JDF Low Flow .040
9	57013.0000	1	Check Valve, Dome .281
10	32848.0000	4	O-Ring
11	56891.0000	2	Nozzle, Fast Flow
12	57004.1000	2	Nozzle Assy, Fast Flow (Includes Item 10 & 11)

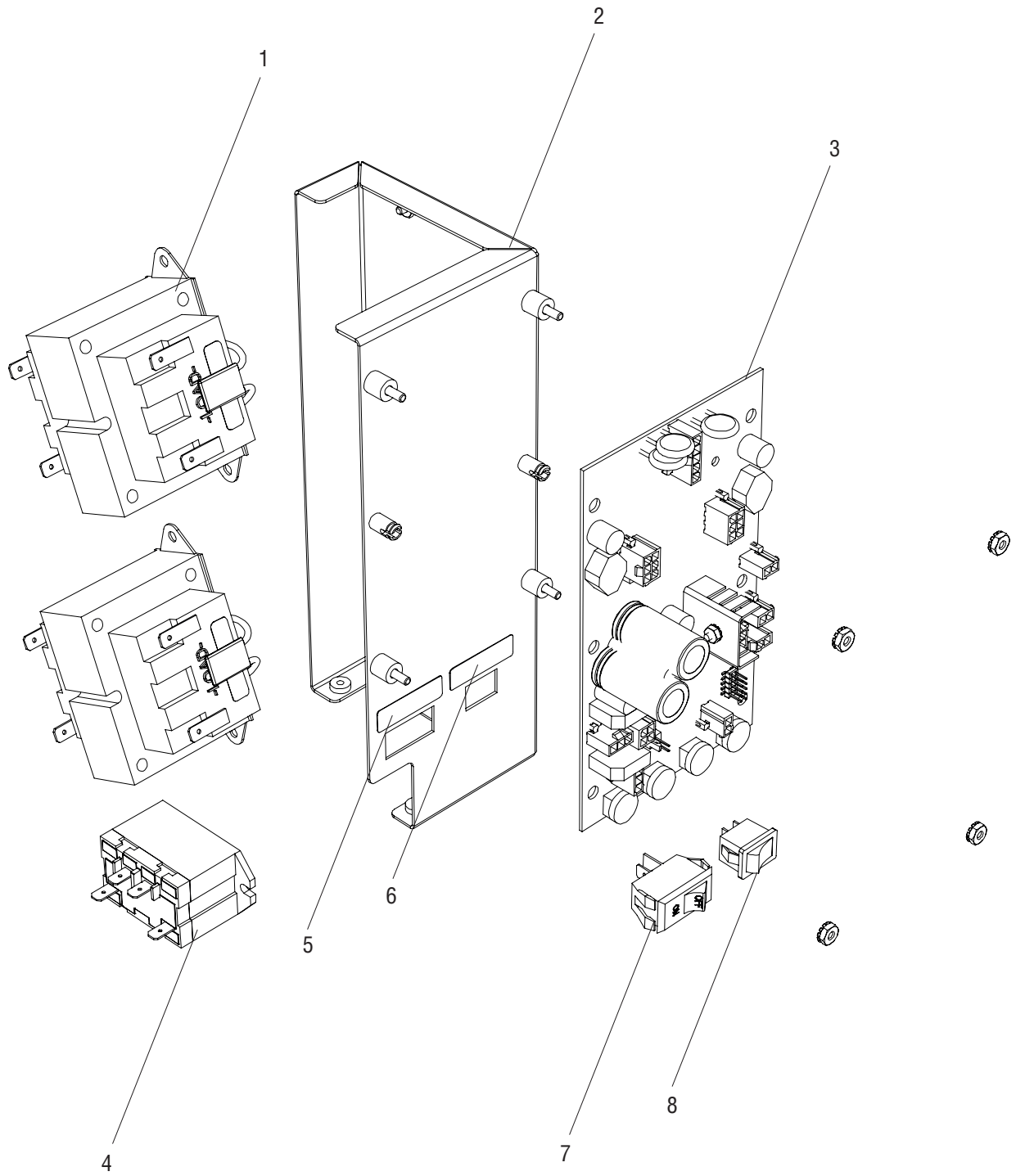
The following items are not illustrated

13	44023.1000	1	Kit, HAYNES Silicone Lube 1 oz. Tube
----	------------	---	--------------------------------------



ELECTRICAL COMPONENTS

JDF-2



ELECTRICAL COMPONENTS

ITEM	PART NO.	QTY.	DESCRIPTION
1	39305.0000	2	Transformer
2	57112.0000	1	Bracket Wldmt Elect Mtg
3	40177.1007	1	Circuit Board, JDF2S Fast Flow
	00973.0001	4	Nut, Keps #6-32
4	37711.1002	1	Relay, 120V SPST
5	41509.0001	1	Decal, Compressor On/Off
6	41509.0004	1	Decal, Program Mode
7	04786.0002	1	Switch, Compressor Switch, On/Off 125/250V VISI-Red Rocker
8	20317.0004	1	Switch, Program Switch Control-Power

The following items are not illustrated

9	27354.0000	1	Bushing, Snap-Sht .875 DIA Mtg
10	20630.0013	1	Power Cord 120V
11	38870.0000	1	Wiring Harness, Transformer to Circuit Bd. (One additional used with Dual Dispense)
12	41436.0000	1	Wiring Harness, Transformer Jumper (Models with Dual Dispense)
13	41203.0001	1	Wiring Harness, Dispense Disable Switch (Models with Program Sw.)
14		1	Wiring Harness, B38G5L Comp. Cap Ext.
15	57469.0000	1	Wiring Harness, Main High Voltage, 120V JDF-FF
16	57468.0000	1	Wiring Harness, Main Low Voltage, 24V JDF-FF
17	41202.0003	1	Wiring Harness, Door JDF FF
18	38873.0003	1	Wiring Harness, Platform -JDF FF
19	57453.0000	1	Wiring Harness, FF Temp Pass Thru
20	57455.0000	1	Wiring Harness, JDF FF Disp Sel
21	57456.0000	1	Wiring Harness, JDF FF Dual Disp Lock